





The E-Line Premium pump has a new feature called "Pro&Safe ®"

Pro&Safe switches the pump on and off by withdrawing/replacing the tank nozzle. If the tank nozzle is not replaced, the pump will switch off after 4 minutes to prevent damage to the pump.

- High-tech self-priming diaphragm pump
- Stainless-steel brushed frame / vertical nozzle holder
- Digital FM-02 flow meter
- Automatic tank nozzle with swivel and buckle prevention
- Blue-tools certified hose (6 metres/1.25 metres)
- Stainless steel connector

Article number: **P&S-26**



Pro&Safe has an infra-red switch, which is not susceptible to pollution.





The **E-Line** has a vertical nozzle holder,

- High-tech self-priming diaphragm pump
- Stainless-steel brushed frame / vertical nozzle holder
- Automatic tank nozzle with swivel and buckle prevention
- Blue-tools certified hose (6 metres/1.25 metres)
- Stainless steel connector

Article number: **E 26-S** (Standard)



With Flowmeter;

- With calibrated flow meter FM-02,
- Flowmeter bracket,
- Article number: **E 26-P** (Premium)



With Flowmeter;

- With calibrated flow meter FM-02,
- Flowmeter bracket,
- Article number: **S 26-P** (Premium)

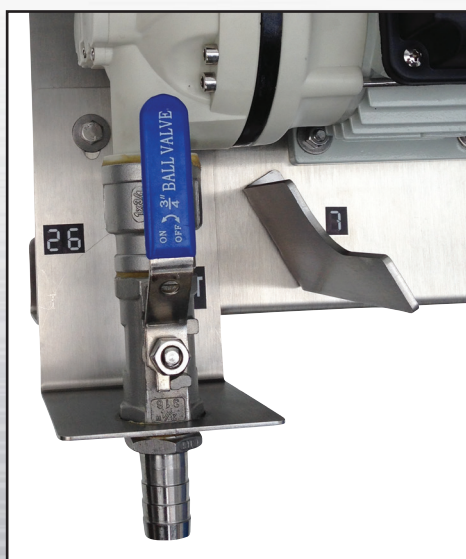
The **S-Line** has practical frame with nozzle holder/drip tray

- High-tech self-priming diaphragm pump
- Stainless-steel brushed frame / vertical nozzle holder
- Automatic tank nozzle with swivel and buckle prevention
- Blue-tools certified hose (6 metres/1.25 metres)
- Stainless steel connector
- Article number: **S 26-S** (Standard)



The **S-Line HYBRID** has an adjustable capacity purposely designed to fill trucks and cars;

- Pump capacity 26 litre/min. as well as 8 litre/min.
- Can be adjusted by simply turning the lever against the L/R stop,
- Automatic tank nozzle purposely designed for low flow and highly sensitive safety cut-out, with 15 mm. spout, 360° rotating hose coupling and buckle prevention,
- 5 plus 1.25 metre hose.
- Article number: S 26-SH (Standard)



Lever upwards against stop,
26 litre/Min.



Lever to the right against stop,
8 litre/Min.



With flow meter;

- Calibrated FM-02 mounted to tank nozzle
- Article number: **S 26-SH** (Standard)



The **R-Line** 's construction is very compact with nozzle holder/drip tray

- High-tech self-priming diaphragm pump,
- Stainless-steel brushed frame / nozzle holder / drip tray,
- Automatic tank nozzle with swivel and buckle prevention,
- Blue-tools certified hose (6 metres/1.25 metres)
- Stainless steel connector
- Article number: **R 26-S** (Standard)



With Flowmeter;

- With calibrated flow meter FM-02,
- Flowmeter bracket,
- Article number: **R 26-P** (Premium)



The **S-Line Drum** has a clamp frame which can be mounted easily and fits a standard drum with great stability.



- Pump capacity 26 litre/min.
- Automatic tank nozzle purposely designed for low flow and highly sensitive safety cut-out, with 15 mm. spout, 360° rotating hose coupling and buckle prevention,
- Nozzle holder/drip tray on the exterior of the drum diameter,
- Blue-tools certified hose 3 metres,
- Suction hose with tube; throughput in cap. (BCS 56X4),
- Article number: **S 26-SD** (Standard Drum)





DP-15 Basic Drum pump

DP-15 Premium Drum pump

DP-08 Premium Car-Filling drum pump

Specifications of the DP-15 basic drum pump:

- 15 litres-per-minute pump, which has a pressure switch that shuts off when the tank nozzle is shut,
- The suction tube consists of a transparent hose with a stainless-steel weight to keep the hose at the bottom,
- BCS 56 x 4-barrel cap with hole is included,
- 3-metre delivery hose with buckle-prevention spring, own brand,
- Manual tank nozzle, own brand,
- Nozzle holder,
- Stainless-steel clamp frame, new design

Article number: **DP-15-B**

Specifications of the DP-15-P premium drum pump:

As above, with NZ-01 automatic tank nozzle

Specifications of the DP-08-CF car-filling drum pump:



- Pump capacity is 8 ltr/min
- Automatic tank nozzle purposely designed for low flow and highly sensitive safety cut-out, with 15 mm. spout, 360° rotating hose coupling and buckle prevention,
- Calibrated FM-02 flow meter with bracket,

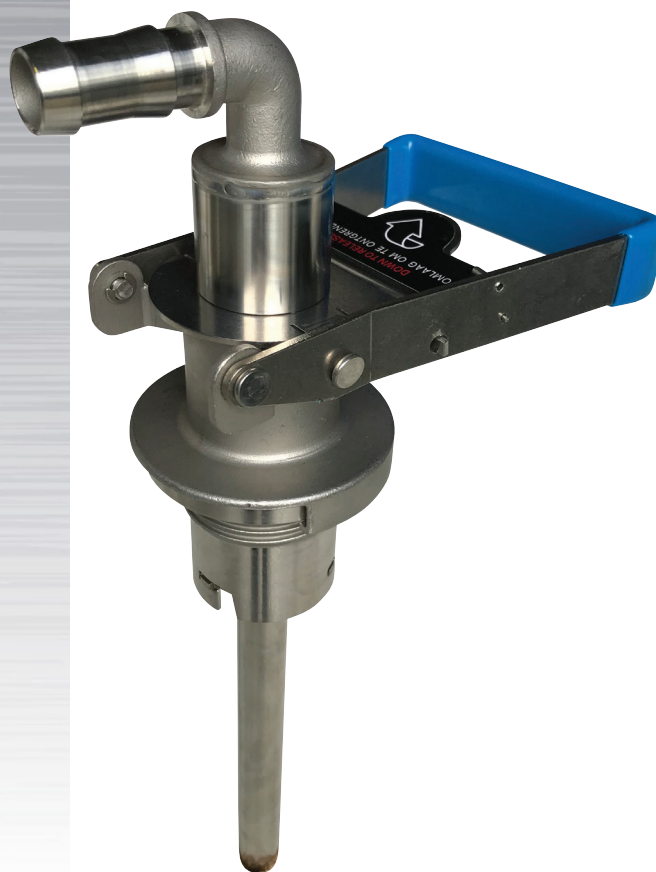
Article number: **DP15-CF**



Refuelling of agricultural machines and industrial vehicles.



Refuelling of cars and delivery vans

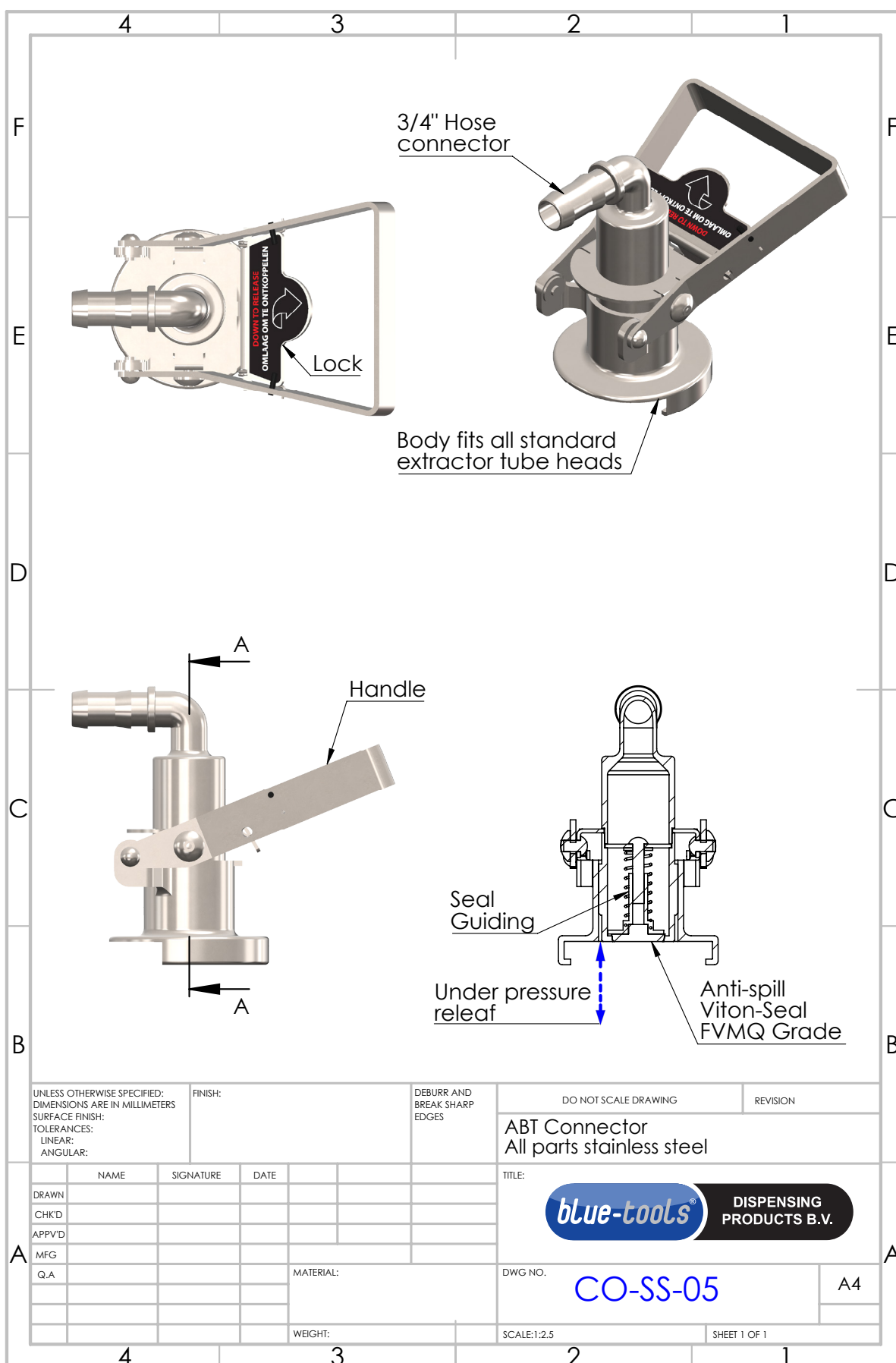


Art. No. CO-SS-05

Very robust construction, with easy and fast connection and disconnection. Resistant to intensive and industrial use.

After disconnecting, the accurately controlled valve cuts off perfectly to avoid fluid spills (AdBlue®). The valve closes the suction pipe completely airtight. In everyday use a plastic connector is the weak link in the connection of the (AdBlue) pump to the IBC or drum, and breaks easily (especially when the IBC is located outside, due to the fast ageing of the plastic). This coupling is made entirely of AISI 304 (1.4301) stainless steel and does not have this flaw. The seal is made of Viton (FVMQ grade) and can therefore also be used for chemical applications. All components have been carefully processed resulting in a vacuum-tight connection to the extractor tube. This ensures a maximum performance of the pump.

 **YouTube** <https://youtu.be/AhABdT1NpH8>





Art. No. SS-ET-I

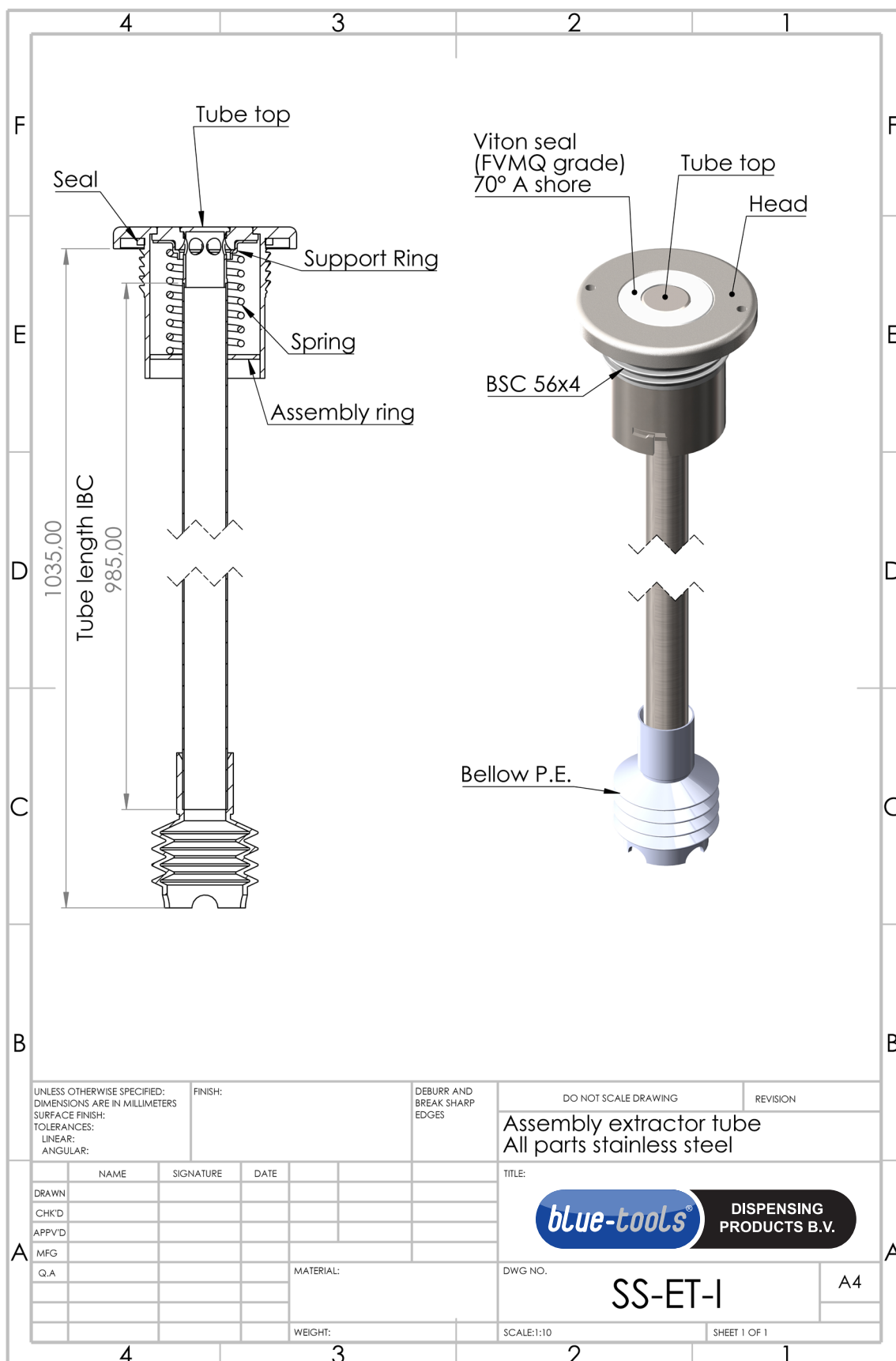
Background: the plastic extractor tubes used to store AdBlue® or Optispray® in IBCs all break in the short or longer term, either due to a long-term connection or to the IBC's high capacity filling with AdBlue®.

(In practice, Optispray® also proves to affect the head of the extractor tube and accelerates ruptures).

This results in malfunctions, downtime, nuisance and damage to the pump system. The extraction tube developed by @Bluetools® is entirely made of AISI 304 (1.4301) stainless steel and is not affected by this shortcoming. The seal is made of Viton (FVMQ grade) and can therefore also be used in chemistry.

The thread is BCS 56 x 4.







When filling IBCs at unclean locations, unintended pollutants are likely to end up in the IBCs, which may lead to malfunctioning of and damage to the pump and the vehicle's SCR system.

Article number: ABT-FILTER 180

- Filter to remove any pollution from AdBlue® (present in the IBC) installed before the pump
- Filter size 80 Mesh, (approx. 180 µm)
- No flow loss of the pump
- Can be dismantled and cleaned by the user
- 'Water lock' in the filter when the IBC is empty, no dehydration / crystallisation
- Stainless-steel suspension bracket at the IBC's rim, (mounting onto a wall is also possible)
- Disassembly wrench
- Two hose clamps





Automatic **Ureum tank nozzle**,
19 mm. stainless-steel spout.
With locking clamp for hands-free
filling.
 $\frac{3}{4}$ inch connection, with Swivel **SW-02**

Article number: **NZ-01**



Automatic **Ureum tank nozzle**,
Material, engineering plastic with stain-
less-steel swivel,
Has been purposely developed for fuelling
cars and
has a very sensitive cut-out switch, with
15mm stainless-steel spout.

Article number: **NZ-03**



Manual tank nozzle, made of plastic,
19 mm stainless-steel spout and swivel.
(Does not cut-off automatically)
Article number: **NZ-04**



Clamp connector / Swivel, with $\frac{3}{4}$ inch
thread. (360° rotating)

Hose 19 x 26 also 15 x 26

(On the left), swivel Art. no. SW-02

Clamp connector Art. no. SW-01



2-inch **Dry-Break** coupling, FEMALE (TODO compatible).
To 'spill-proof' fill large storage systems.
Article number: **DB-02 female**



Siphon pump with a capacity of 0.35 litres per stroke.
2" drum connection. Accessory addition;
3-metre hose +
spout tube and BCS 56 x 4 adapter
Article number: **HP-03**



FM-02 turbine flow meter, 1-inch Ext/Ext connection,
comprehensive functionality is supplied calibrated.
Art. no. FM-02



2-inch **Dry-Break** coupling, MALE (TODO compatible).
To 'spill-proof' fill large storage systems.
Article number: **DB-02**



Printer, (paneel inbouw) voor het uitprinten van de tankbon. Instelbare parameters als Firmanaam, literprijs en datum/tijd. (meelopend).
Wordt samen geleverd met K24 flowmeter met puls uitgang.
Art. nr. **PR-01**



Pump safety, is mounted between the pump and socket, and releases the pump for 5 minutes. This device prevents damage to the pump that would inadvertently be caused by its continued running.
Article number: **PB-02**



Dispensing Products B.V.
Van de Reijtstraat 54
4814 NE Breda



**DISPENSING
PRODUCTS B.V.**



076-7660112
06-51044480

Adriaan van der Wouden



www.blue-tools.com

avdw@blue-tools.com



is a registered trademark of Dispensing Products b.v.